

VCRI AD 2-29  
18 JUL 19

STANDARD DEPARTURE CHART-  
INSTRUMENT (SID)-ICAO

TRANSITION ALTITUDE  
11000 FEET

APP 124.35  
TWR 119.85  
121.70

MATTALA/Mattala Rajapaksa  
Intl. Airport (VCRI)  
RWY 05

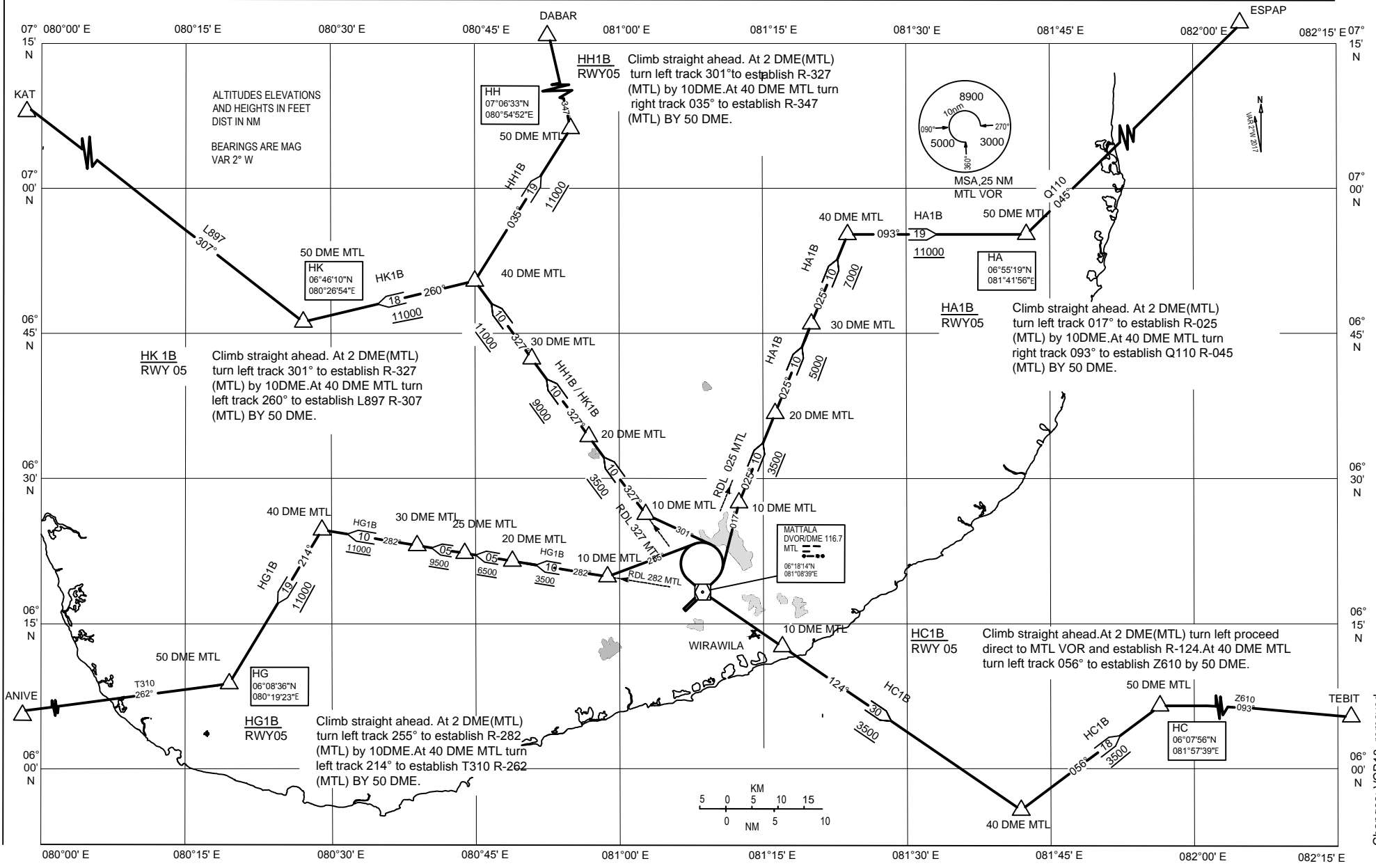
HG1B HK1B HH1B HA1B HC1B

AIP  
SRI LANKA

AIRAC AIP AMDT 1/19

CIVIL AVIATION AUTHORITY OF SRI LANKA

Changes: VCRI18 removed



VCRI AD 2-31  
18 JUL 19

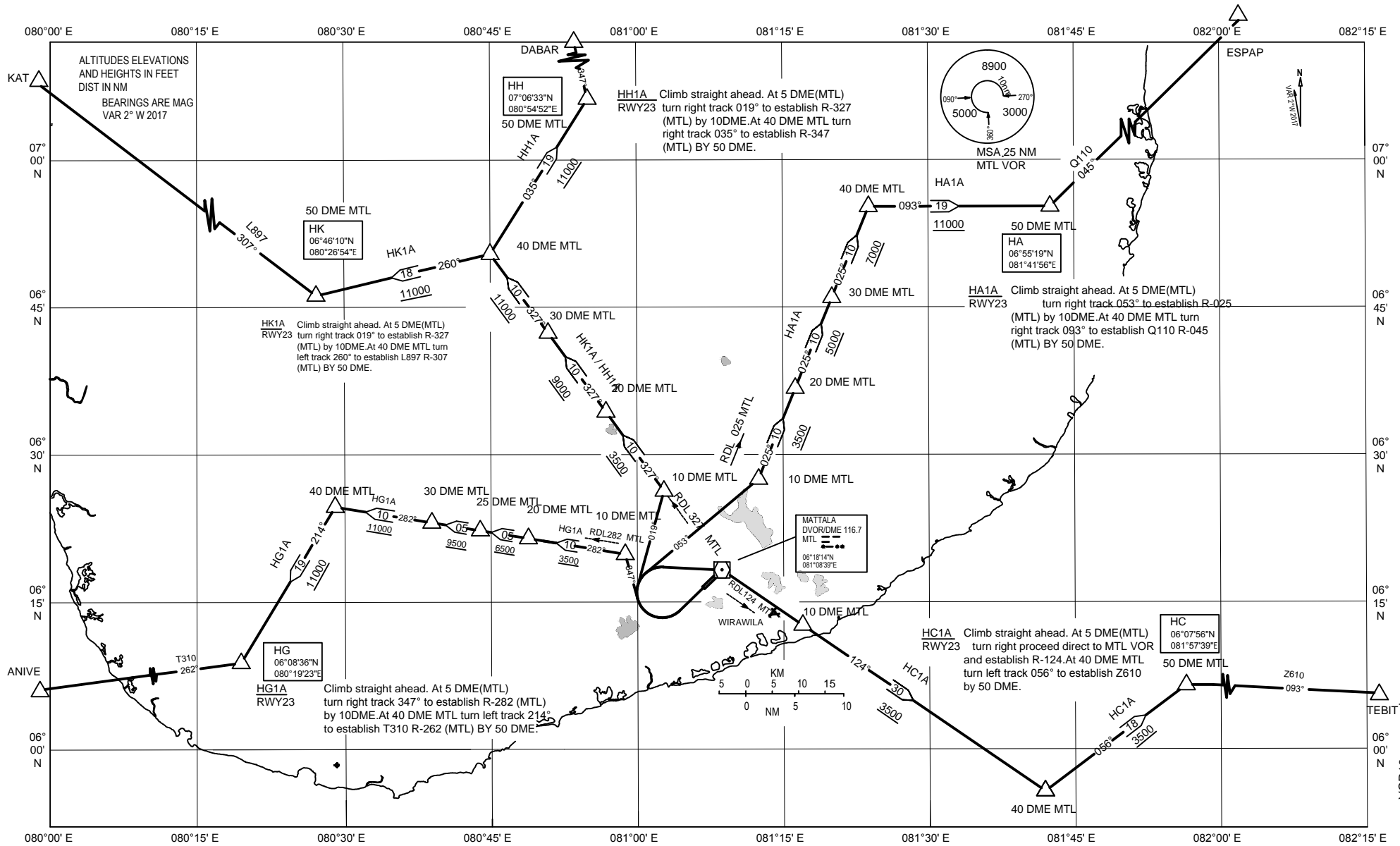
STANDARD DEPARTURE CHART-  
INSTRUMENT (SID)-ICAO

TRANSITION ALTITUDE  
11000 FEET

APP 124.35  
TWR 119.85  
121.70

MATTALA/Mattala Rajapaksa  
Intl. Airport (VCRI)  
RWY 23

HG1A HK1A HH1A HA1A HC1A



AIP  
SRI LANKA

AIRC AIP AMDT 1/19

CIVIL AVIATION AUTHORITY OF SRI LANKA

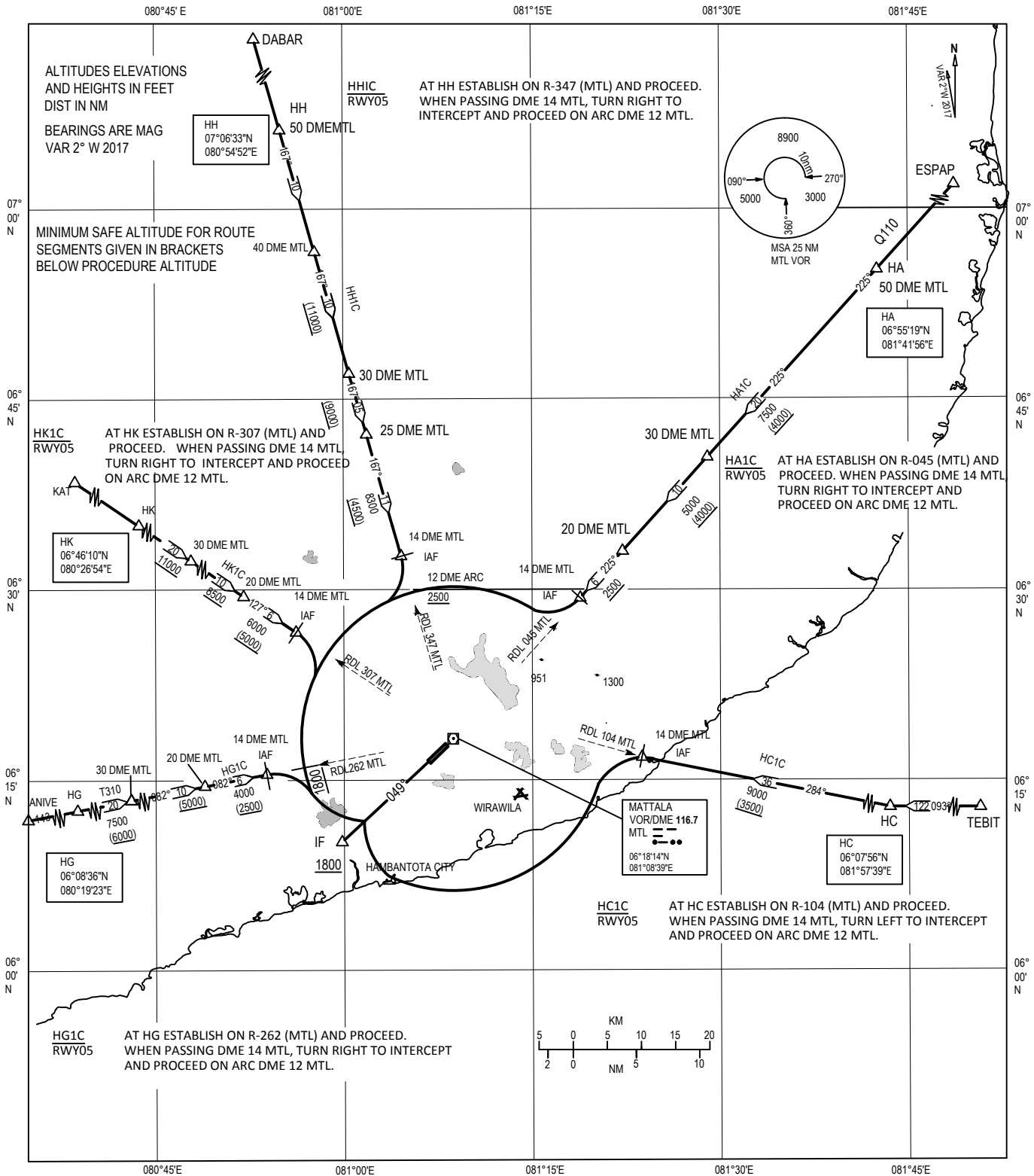
STANDARD ARRIVAL CHART-  
INSTRUMENT (STAR)-ICAO

TRANSITION ALTITUDE  
11000 FEET

APP 124.35  
TWR 119.85  
121.70

MATTALA/Mattala Rajapaksa  
Intl. Airport (VCRI)  
RWY 05

HG1C HK1C HH1C HA1C HC1C



STANDARD ARRIVAL CHART-  
INSTRUMENT (STAR)-ICAO

TRANSITION ALTITUDE  
11000 FEET

APP 124.35  
TWR 119.85  
121.70

MATTALA/Mattala Rajapaksa  
Intl. Airport (VCRI)  
RWY 23  
HG1D HK1D HH1D HA1D HC1D

